



TRANSMISION

WE PROUDLY ESTABLISH OURSELVES AS IMPORTERS & DEALING OF THE WORLD-WIDE PROVED BRANDS LIKE (MITSUBISHI, BANDO, SYNCHROFLEX, BRCROFLEX, OPTIBELT, CARLISE)

GATES UNITTA ASIA –WORLD LEADER IN BELTS N HOSES

(VBELT/POLY-V BELT/POLYFLEX BELT/POLYCHAIN GT/ GT, GT2, GT3, GT4/TIMING BELT)

CONTITECH (CONTITENAL GERMANY)-GERMANY'S NO1 BRAND IN BELTS

(VBELT/TIMING BELT/POLYRIBS BELT/EGALE PD SILENT SYNC/SYNCHROCHAIN BELT)

LOVEJOY INDIA- LICENSEE OF THE LOVEJOY USA

(STAR /GEAR / PINBUSH /TYRE/RN/RBW/ DISCOFLEX COUPLING)

HUTCHISON(FRANCE)-PIONEER IN POLYRIB

(PJ/PL/PK/PM/PH)

MEGA DYNE ITALY- LEADERS IN PU BELTS

(OPEN PU ROLL/IMPORTED PU TIMING BELT/IMPORTED LINKBELT/POLYRIBS/KNITTING BELT)

FENNER - VBELTS N COUPLING N PULLEYS

(VBELT, TIMING BELT, MULTIRIBS, COGGED BELT, WEDGE BELT, PU TIMING, IMPORTED LINKBELT, PINBUSH, TYRE, GEAR, SPRING, STAR COUPLING, BANDED BELTS)

KTR - ROTEX RANGE OF THE COUPLINGS

(GR, GS, BOWEX, POLYNORM)

NITTA JAPAN - RANGE OF THE IMPORTED FLAT BELT

(GRADE TFL-6s, TFL-10s, TFL-15s, TFL-18s)

GATES INDUSTRIAL POWER TRANSMISSION PRODUCT



Powerband



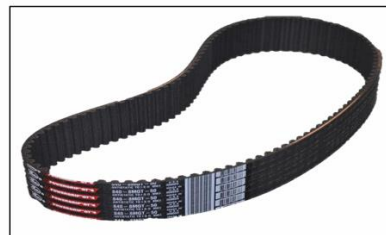
Micro -V



Polyflex



PolyChain GT Carbon



GT4



HTD



CTB



Twin Power



Long Length

GATES INDUSTRIAL & HYDRAULIC FLUID POWER PRODUCT FAMILY

CHEMICAL (GREENLINE) HOSE



CARBON FREE HOSE



FUEL MASTER™ CURB PUMP
1WB HOSE



CHEM MASTER™ PLUS XLPE



WATER JET HOSE



STEAM (GREENLINE) HOSE



AIR-WATER (GREENLINE) HOSE



MINE MASTER™ AIR DRILL 500



CNG HOSE



CONCRETE HOSE



ROCK DRILL (GREENLINE) HOSE



SPIRAL WIRE HOSE- SAE 100R15



FENNER INDUSTRIAL POWER TRANSMISSION PRODUCTS

**Fenner Bush Type
Flexible Couplings**



**HRC
COUPLINGS**



**Essex
Jaw Couplings**



**Fenner
Gear Couplings**



*Fenner
Resilient Couplings*



**Taper-Lock®
Dual Duty Pulleys**



**Timing & High
Torque Pulleys**





Fenner Shaft Mounted Speed Reducer



FENAFLEX TYRE COUPLINGS



CONTINENTAL CONTITECH POWER TRANSMISSION PRODUCTS



Synchrochain carbon



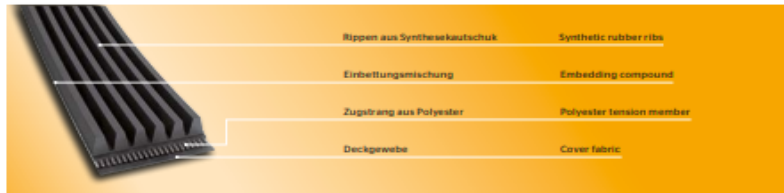
TORQFLEX



WINGFLEX

CONTI®V MULTIRIB

Keilrippenriemen nach DIN 7867 / ISO 9982 für große Übersetzungen, hohe Riemen-
geschwindigkeiten, kleine Scheibendurchmesser und für Rückenspannrollen.
V-ribbed belts to DIN 7867 / ISO 9982 for high transmission ratios, high belt speeds,
small pulley diameters and reverse tensioning idlers.

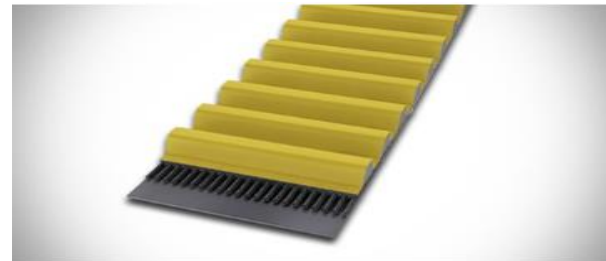


Eigenschaften:

- › Temperaturbeständig von -30 °C bis +80 °C
- › Besonders lauffähig
- › Geeignet für Gegenbiegung/Rückenspannrollen
- › Elektrisch leitfähig nach ISO 1813
- › Bedingt ölbeständig
- › Tropenbeständig
- › Staubfest

Properties:

- › Temperature range from -30 °C to +80 °C
- › Enhanced running smoothness
- › Suitable for reverse flexing/reverse tensioning idlers
- › Electrically conductive to ISO 1813
- › Conditionally resistant to oil
- › Suitable for tropical climates
- › Dust-proof



Conti®Synchronchain Carbon

Heavy-duty timing belt for all extreme applications with extremely high torques; also suitable for use as a replacement for chain drives.



Conti®V

Wrapped V-belts for demanding drives in all sectors of machine engineering (classic in accordance with DIN 2215, narrow in accordance with DIN 7753).



Conti®V Advance

Wrapped heavy-duty V-belts with reinforced tensile member and advanced compound for safely transmitting more power, DIN 7753.



Conti®V Supreme (POWER)

High-performance V-belt with low-stretch tension member and advanced compound for power transmission under highest loads; according to DIN 2215/DIN 7753.



CONTI® SYNCHROBELT

Timing belts for the low and mid-power range.



Conti® Synchronmotion

A new generation of endless PU timing belts in the length range from 1,500 to 14,500 mm, with a maximum width of 100 mm.



CONTI® SYNCHROFORCE CXP

Heavy-duty timing belts for excellent power transmission at high speeds.



LOVEJOY INDIA COUPLINGS



Jaw Flex Couplings



Pin & Bush Couplings



Tyre Flex Couplings



Sleeve Flex Couplings



Disc / Laminar Non-API
Couplings



Rigid Couplings



Gear Flex Couplings



Grid Flex Couplings



API Couplings

KTR ROTEX COUPLINGS

ROTEX® GS Backlash-free servo couplings



BoWex® curved-tooth gear couplings

Product image BoWex M I curved-tooth gear coupling compact maintenance-free



BoWex® curved-tooth gear couplings



ROTEX® Standard

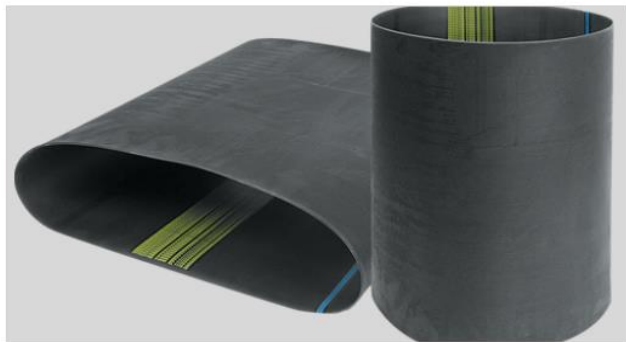
0 - 35,000 Nm / torsionally flexible jaw coupling



MEGADYNE INDUSTRIAL POWER TRANSMISSION PRODUCTS



PV RUBBER RIBBED



Megadyne manufactures J, L and M section multi-rib V belts for use in high speed and high ratio drive applications. Constructed with...

MEGARIB



Megarib multi v rib belts are molded endless with thermoset PU and high strength stable polyester (Kevlar on request). Designed for high speed, high...

RUBBER ENDLESS



RUBBER OPEN END



NOTE: ALSO DEAL IN FOLLOWING ITEMS

GEAR BOX: FENNER SMSR/ELECON/PREMIUM -ALUMINUM GEARMOTOR

DRAW CHAIN: -CLOSED AND OPEN TYPE IN STOCK

BELTS: INDIAN & IMPORTED VARISPEED BELT, BANDED BELT, FL ES BAND, FLAT BELT, EMERY ROLLS

COUPLINGS: - JAW, ENCODER/BELLOW/DISC/ODHAM/NORMAX/SHIM/VARISPEED PULLEY & LOCKING assembly

CONTACT US

SHYAM POWER

MOBILE NO:- 9873838226

TRANSMISSION

EMAIL ID :- nitin.shyampower@gmail.com

A HOUSE OF POWER TRANSMISSION ITEMS

(LEADING DEALER OF 100% GENUINE PRODUCTS)

*SALES OFFICE :- 5224/104.1ST FLOOR, NIGAM MARKET, G,B ROAD,
DELHI – 110006*